



**EyeQ managed services by GeoEye** enable enterprise, global access to secure, timely and accurate location information seamlessly integrated into your current business environment. EyeQ combines imagery products with on-demand tools for managing your geospatial information and project-based collaboration. With EyeQ, you can search, organize, and share geospatial data while reducing the total cost of ownership. By hosting the data and providing an easy-to-use user interface, EyeQ allows non-technical as well as advanced users to interact with geospatial data.

### Industry Applications

- National Security
- Federal Civil Government
- State & Local Government
- Architecture, Engineering and Construction (AEC)
- Critical Infrastructure
- Energy
- Agriculture
- Forestry
- Real Estate
- Utilities
- Transportation

#### EyeQ | AT-A-GLANCE

##### Content Services

- Single Site Layer Orders
- Area Subscription Services
- Monitoring Services
- Archive Access Subscriptions



##### Web Services

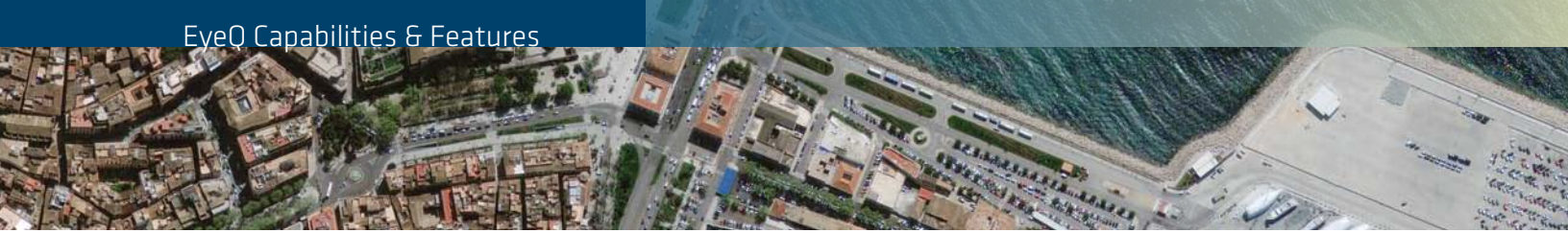
- Web-based Access for Users Throughout the Enterprise
- Web-based Collaboration
- Workspace Management Services
- OGC-compliant Services



##### Hosting Services

- GeoEye Imagery
- Customer Provided Content
- Storage





## Key Benefits of EyeQ

### Reduced total cost of ownership

Eliminates the need for additional infrastructure, staff, and tools for hosting and distribution

### Scalable

Scales rapidly and as needed to accommodate demand or project-based needs

### Secure

Industry-standard data encryption and monitoring ensuring your data and usage is safe

### Cost-effective universal content

Fixed annual subscription for hosting and content with the ability to receive updates

### Interoperable

OGC interfaces such as WMS, WMTS, WCS, and WFS assure interoperability with most popular GIS and image analysis applications

### Web Dissemination

Intuitive browser-based publishing and viewing tools make it easy to access, fuse, and serve your geospatial data

### Collaborative

Web-based access for a wide range of users in the office or field

### Download Formats

Clip & Ship capabilities in the following formats: GeoPDF, MrSID, NITF, RPF, GeoTIFF, GeoJP2, JPEG, and PNG

## EyeQ Capabilities

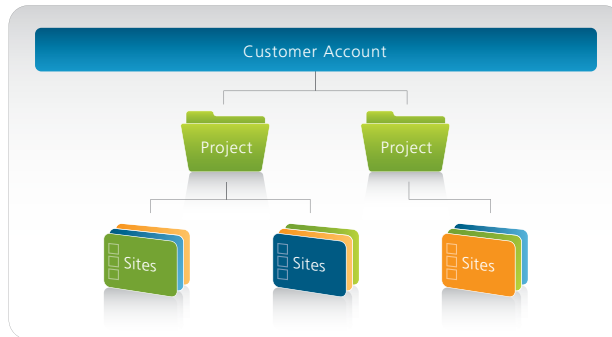
### Search

Search and view your pre-defined collection of GeoEye-1, IKONOS, and other geospatial content.



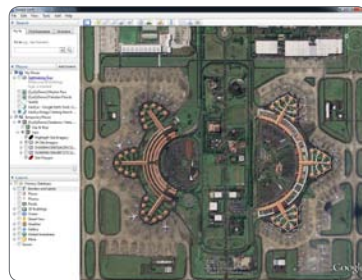
### Organize

EyeQ enables Web-based access for a wide range of users in the office or field. Your content orders match your project specifications because your team works together.

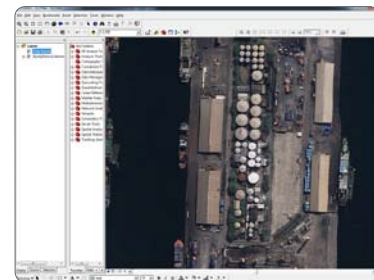


### Share

With Web Map Service (WMS), Web Coverage Service (WCS), and Keyhole Markup Language (KML), your content is available anywhere you need it. Using BLINK Broadcast and the BLINK Viewer URL, users have a simple interface to share project and site content with others.



Credit: Google™



Credit: ESRI®

## For More Information

800.232.9037  
International +1.703.480.5670

Contact Your GeoEye Sales Representative

GeoEye.com

