



EyeQ managed services by GeoEye enable enterprise, global access to secure, timely and accurate location information seamlessly integrated into your current business environment. EyeQ combines imagery products with on-demand tools for managing your geospatial information and project-based collaboration. With EyeQ, you can search, organize, and share geospatial data while reducing the total cost of ownership. By hosting the data and providing an easy-to-use user interface, EyeQ allows non-technical as well as advanced users to interact with geospatial data.

Key Benefits:

Reduced total cost of ownership

Eliminates the need for additional infrastructure, staff, and tools for hosting and distribution

Collaborative

EyeQ enables Web-based access for a wide range of users in the office or field

Easy-to-use

By providing an easy-to-use user interface, EyeQ allows non-technical as well as advanced users to interact with geospatial data

Cost-effective universal content

Fixed annual subscription for hosting and content with the ability to receive updates

Interoperable

OGC interfaces such as WMS, WMTS, WCS, and WFS assure interoperability with most popular GIS and image analysis applications

Web Dissemination

EyeQ's intuitive browser-based publishing and viewing tools make it easy to access, fuse, and serve your geospatial data

Secure

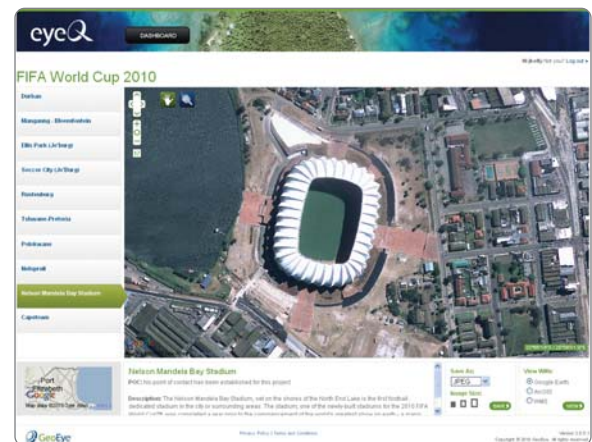
EyeQ uses industry standard data encryption, ensuring your data and usage monitoring is safe

Scalable

Scales rapidly and as needed to accommodate demand or project-based needs



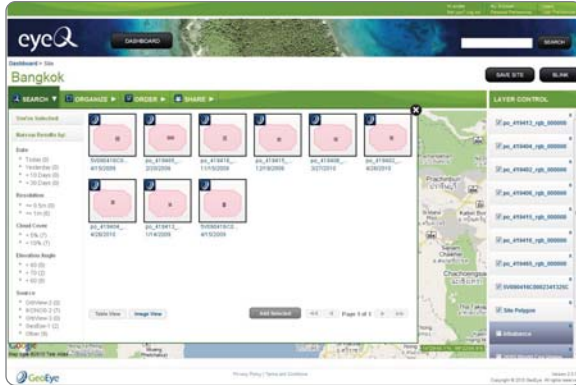
EyeQ offers unparalleled capabilities to discover, visualize, and share geospatial information across the enterprise.



EyeQ Capabilities

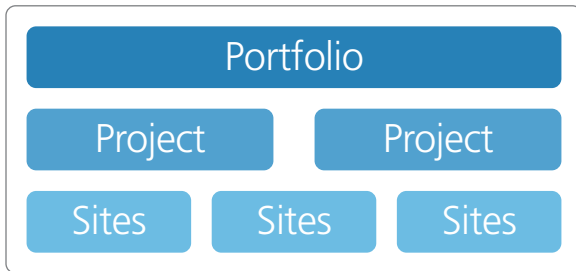
Search

Search and view your pre-defined collection of GeoEye-1, IKONOS, and other geospatial content.



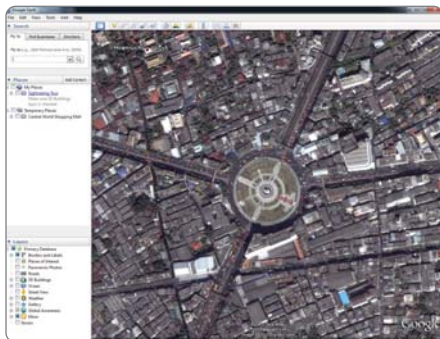
Organize

EyeQ enables Web-based access for a wide range of users in the office or field. Your content orders match your project specifications because your team works together.

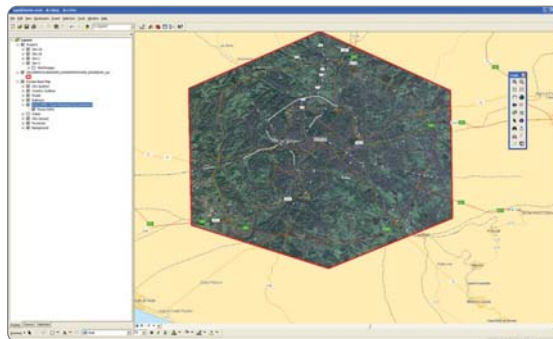


Share

With Web Map Service (WMS), Web Coverage Service (WCS), and Keyhole Markup Language (KML), your content is available anywhere you need it. Using BLINK Broadcast and the BLINK Viewer URL, users have a simple interface to share project and site content with others, view and download JPEGs, or Clip-and-Ship GeoTIFF or NITF sections of imagery.



Credit: Google™



Credit: ESRI®

For More Information

For more information about EyeQ, contact a GeoEye Sales Representative.

